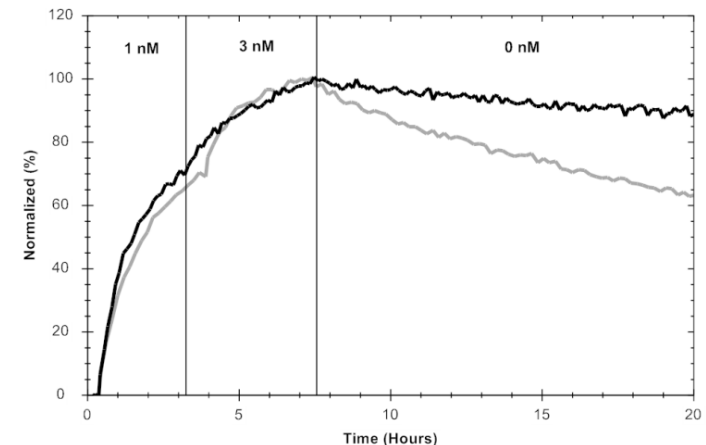
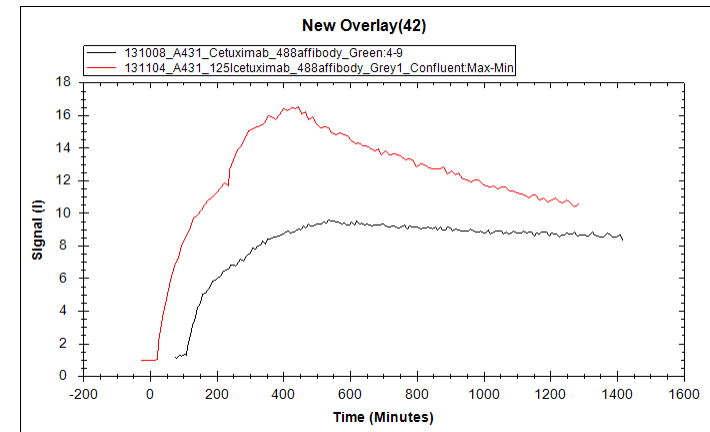


Improve interpretation with
TraceDrawer:
How to create figures for publication

www.tracedrawer.com

Create high-quality graphs for publication

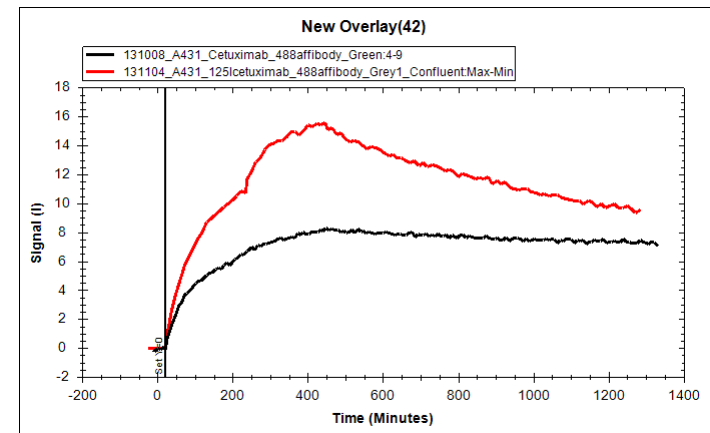
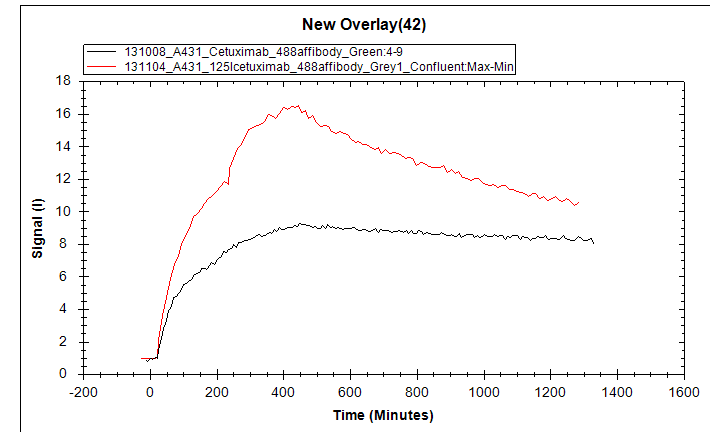
- How to go from...
 - Unstructured
 - Low-res
 - Difficult to interpret
- ...to
 - Structured
 - High-quality/ publishable
 - Altered to facilitate interpretation



Move curves

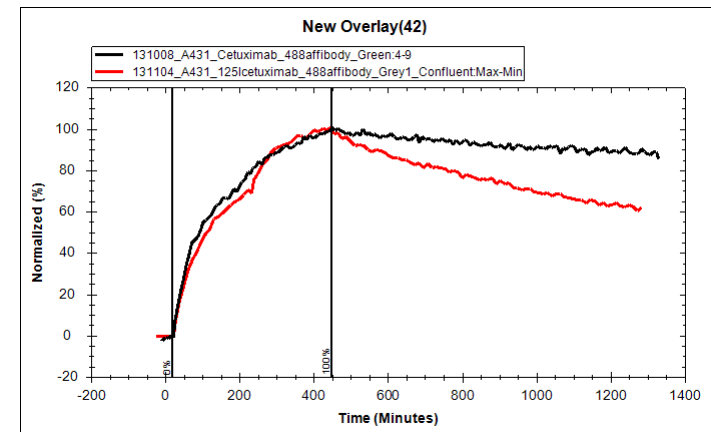
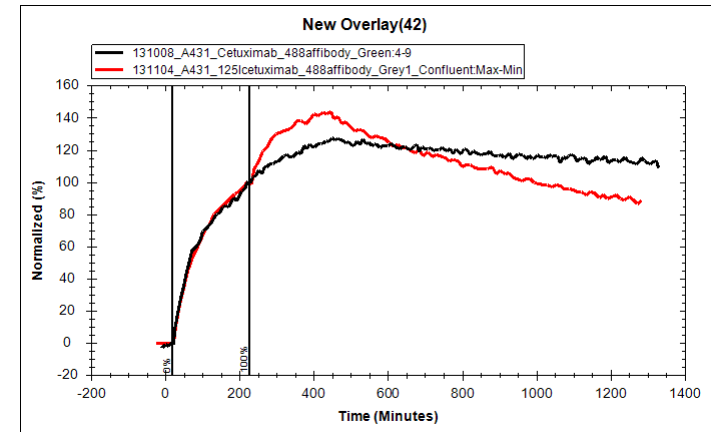
- Align start of association
 - Curve move (Modification tab)

- Set signal of association start to 0
 - Curve offset (Modification tab)



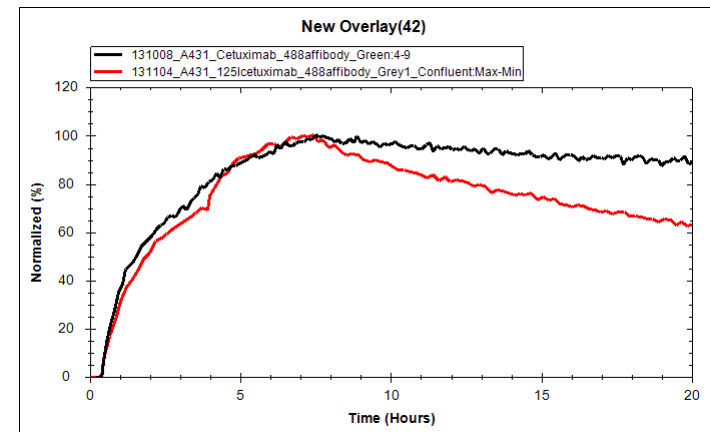
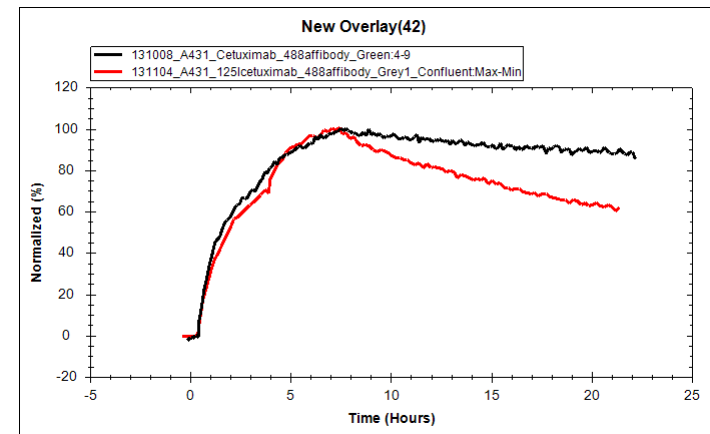
Normalization

- Optional: Normalize curves (Scaling tab)
 - Set 100 % to e.g. end of first association phase, or before dissociation
 - Goal: Should improve data interpretation



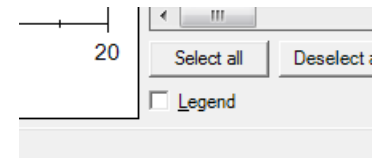
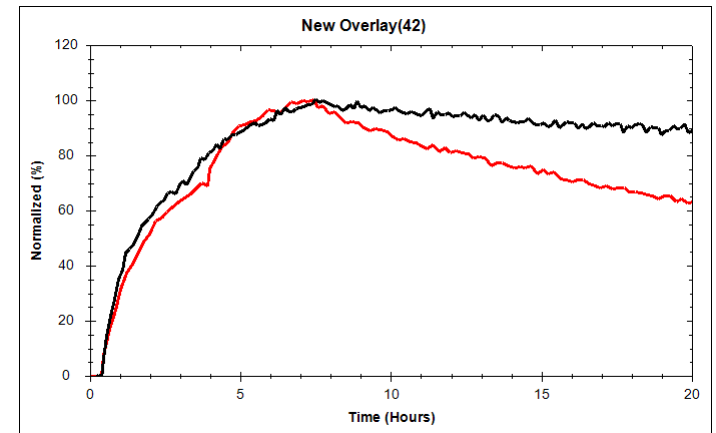
Change scale and axis

- Choose a relevant time scale (Appearance tab),
 - Hours if measurement was > 3 h.
- Axis settings (right-click on/outside the axis)
 - Suggestion: Start (x,y) at (0,0)
 - Choose settings to present all relevant data, but not more (avoid large graph spaces without data)



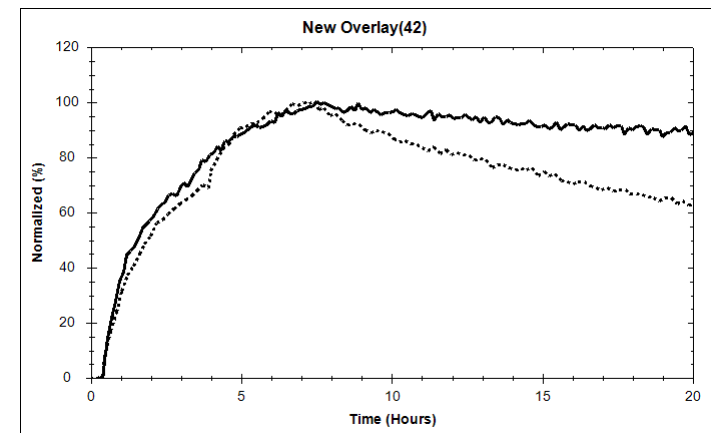
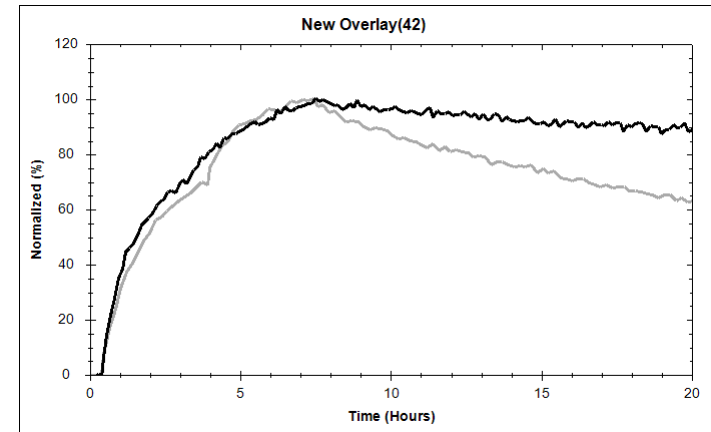
Simplify

- Hide the legend
 - Include all curve info in the manuscript instead



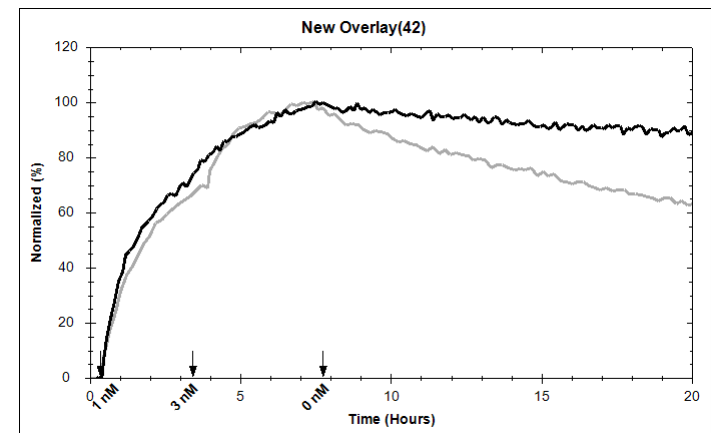
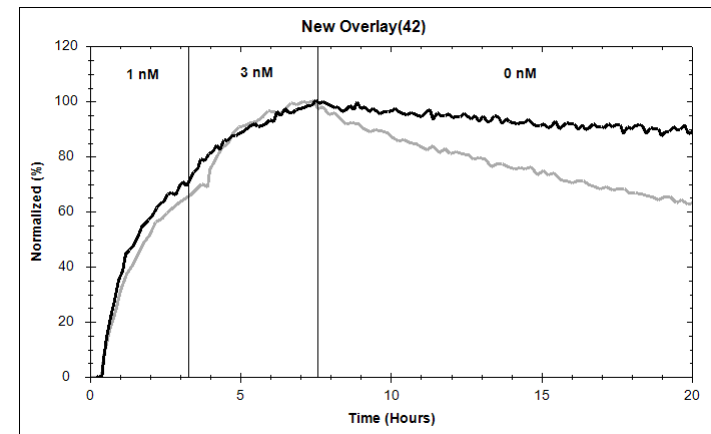
Change color and/or line type

- If the graph is to be printed in greyscale:
 - Grey and black curves or black curves with different line type
 - Choose a line width that is clear in print
 - All changes can be done in Appearance tab: Curve colors: More



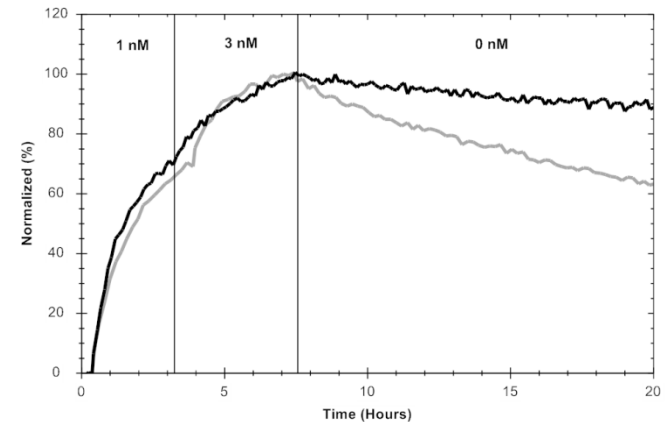
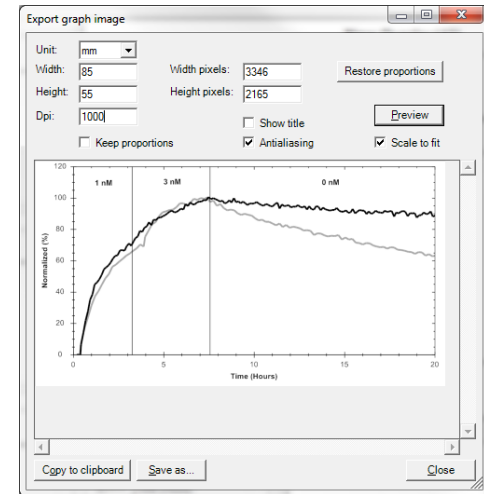
Add curve info in graph

- Optional:
 - Add information about the measurement
 - Alternative to picture editing softwares
 - Right-click in graph:
 - Add line/arrow
 - Add text boxes (in graph or on axis)



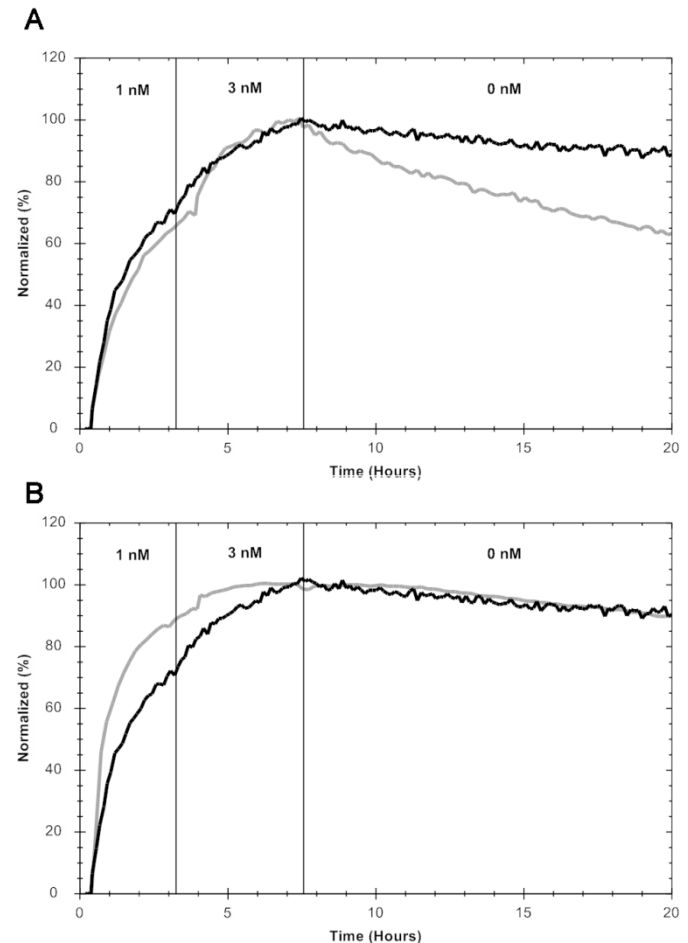
Export graph

- Copying a graph creates a low-res bmp file – not acceptable for publishing
- Instead:
 - File: Export graph
 - Choose resolution based on journal requirements for line art figures (300-1200 dpi)
 - Un-tick "Show title"
 - One column figures:
 - 80-85 mm in width
 - Choose file format when saving, based on requirements
 - TIF/TIFF often the best




Add as a panel in a larger figure

- In a picture editing software:
 - Create a blank workspace, the same resolution as your graphs
 - Width: 100-120 % of the width of the graph, if graphs in a column
 - Height: 100-120 % of the height of the graph, if graphs in a row
 - Add graphs
 - Add panel info (A, B...)



Additional tips

- To improve comparison/interpretation:
 - Use the same time scale for all graphs in the same figure
 - Try to use the same axis settings for all graphs in the same figure
 - Combine different shades of grey with different line types to create variation in graphs with many curves



For more information about TraceDrawer,
please visit
www.tracedrawer.com